



19, STRIVEN ROAD, WEMYSS BAY, PA18
6DJ



 neillclerk
ESTATE AGENTS



Description

Occupying a corner plot within a desirable cul de sac location this extended four bedroom DETACHED VILLA offers a spacious family home. Generous sized gardens extend to the front, side and rear. The front garden features a lawned plot. There is a spacious enclosed rear garden with decked area for relaxing on summer days with further large lawned plot. An additional benefit is the garage with side courtesy door. The monoblock driveway provides off street parking for multiple cars.

Specification includes: double glazing and gas central heating. Lies convenient for the primary school and local amenities. Wemyss Bay railway station offers a regular service to Glasgow which is ideal for commuters.

Family apartments comprise: Entrance Hallway by UPVC double glazed door with windows to front, side and rear. The dual aspect Lounge/Dining Room is a spacious room featuring a front window plus French doors leading to the Conservatory which overlooks the rear garden.

There is a rear facing Kitchen with door leading to the garden . The kitchen features oak style fitted units and grained black work surfaces Appliances include: extractor hood, gas hob and electric oven.

The downstairs double sized Bedroom is a dual aspect room with fitted wardrobes and feature wall panelling.

Stairs lead to the Upper Landing with side window, two inbuilt cupboards and hatch to the loft. There are two further double sized Bedrooms and 4th single Bedroom which is ideal for families. The Bathroom features a three piece suite offering: pedestal wash hand basin, wc and bath with chrome style mixer shower. There is wet wall panelling and decorative panelled ceiling.

Viewing is recommended for this extended home. EPC = D.

Measurements

Entrance Hall

Lounge/Dining Room
3.61m x 7.62m (11'10 x 25'0)

Conservatory
3.40m x 3.81m (11'2 x 12'6)

Kitchen
3.07m x 2.79m (10'1 x 9'2)

Downstairs Bedroom
3.12m x 4.34m (10'3 x 14'3)

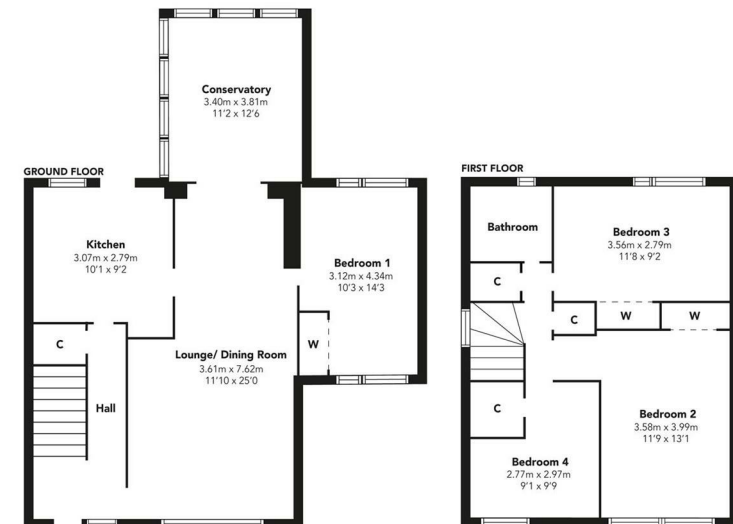
Upper Landing

Bedroom 2
3.58m x 3.99m (11'9 x 13'1)

Bedroom 3
3.56m x 2.79m (11'8 x 9'2)

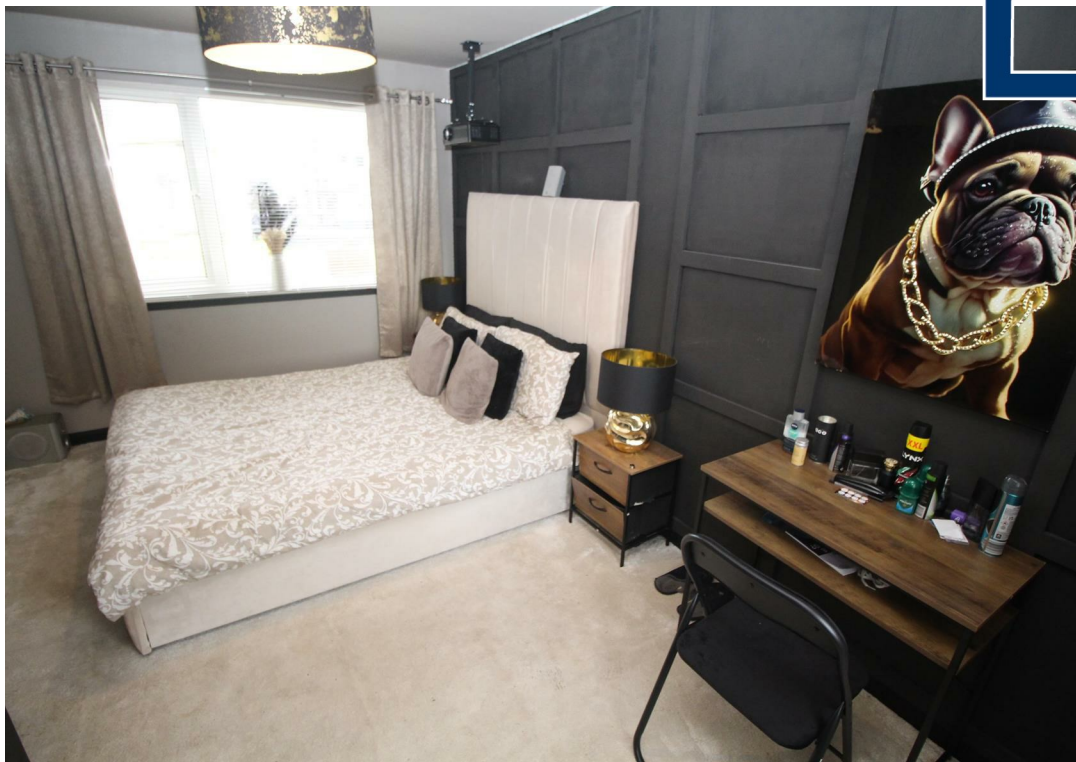
Bedroom 4
2.77m x 2.97m (9'1 x 9'9)

Bathroom



Floorplans are indicative only - not to scale
Produced by Plushplans











Agents Notes:

These sales particulars are set out as a general outline only, issued in good faith, but do not constitute representations of fact and do not form part of any offer or contract. Any services, equipment, appliances, fittings or central heating systems have not been tested and no warranty is given or implied that these are in working order. All measurements are approximate and for guidance only.

Neither Neill Clerk Estate Agents nor any of its employees or agents has any authority to make or give any representation or warranty whatever in relation to this property.

The
next
step..



To view call 01475 888400. Speak to us 7 days a week until 11pm every day to book your viewing appointment.

House to sell or rent?

Call 01475 888400 to book your free market appraisal.

Require a solicitor?

Ask us to supply a free legal quotation from Neill Clerk & Murray, Solicitors.
www.neillclerkmurray.co.uk

Stay fully up-to-date by following Neill Clerk on:



**60 West Blackhall Street
Greenock
Renfrewshire
PA15 1UY**

t: 01475 888400

e: sales@neillclerk.co.uk

w: www.neillclerk.co.uk



Find all our properties at: [rightmove](https://www.rightmove.co.uk) [Zoopla](https://www.zoopla.co.uk) [onTheMarket.com](https://www.onthemarket.com) [s1homes.com](https://www.s1homes.com)